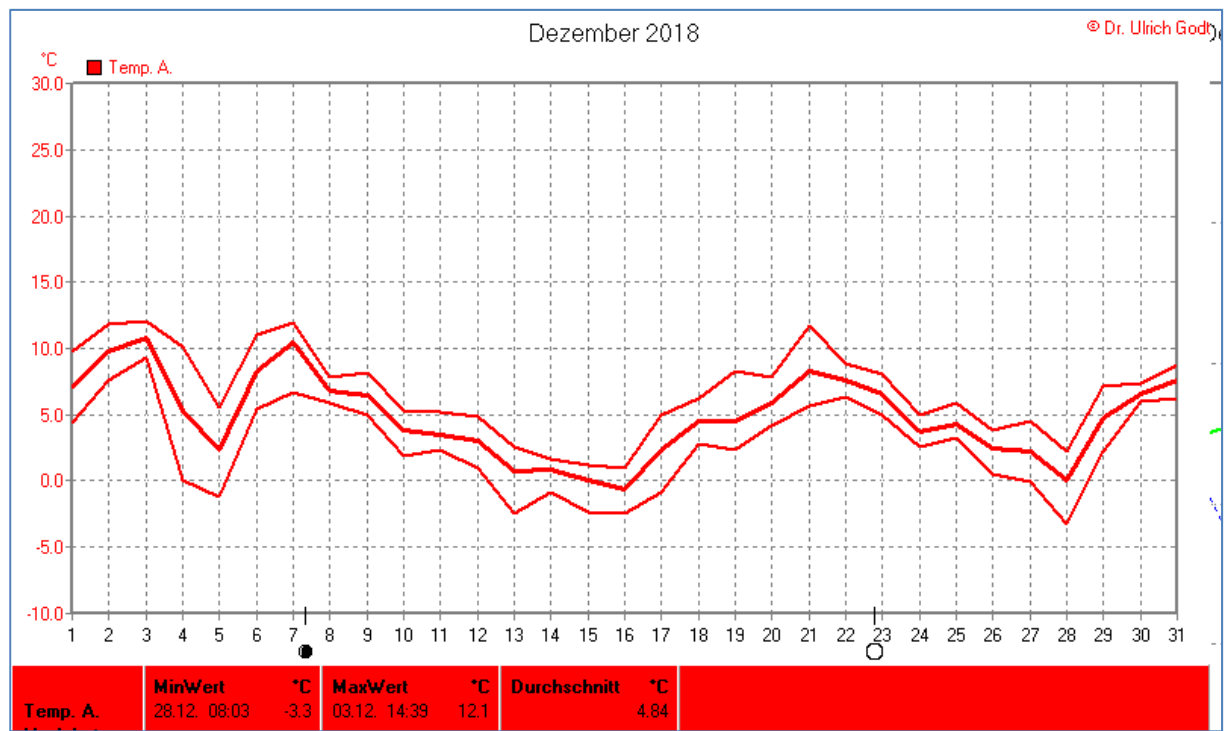
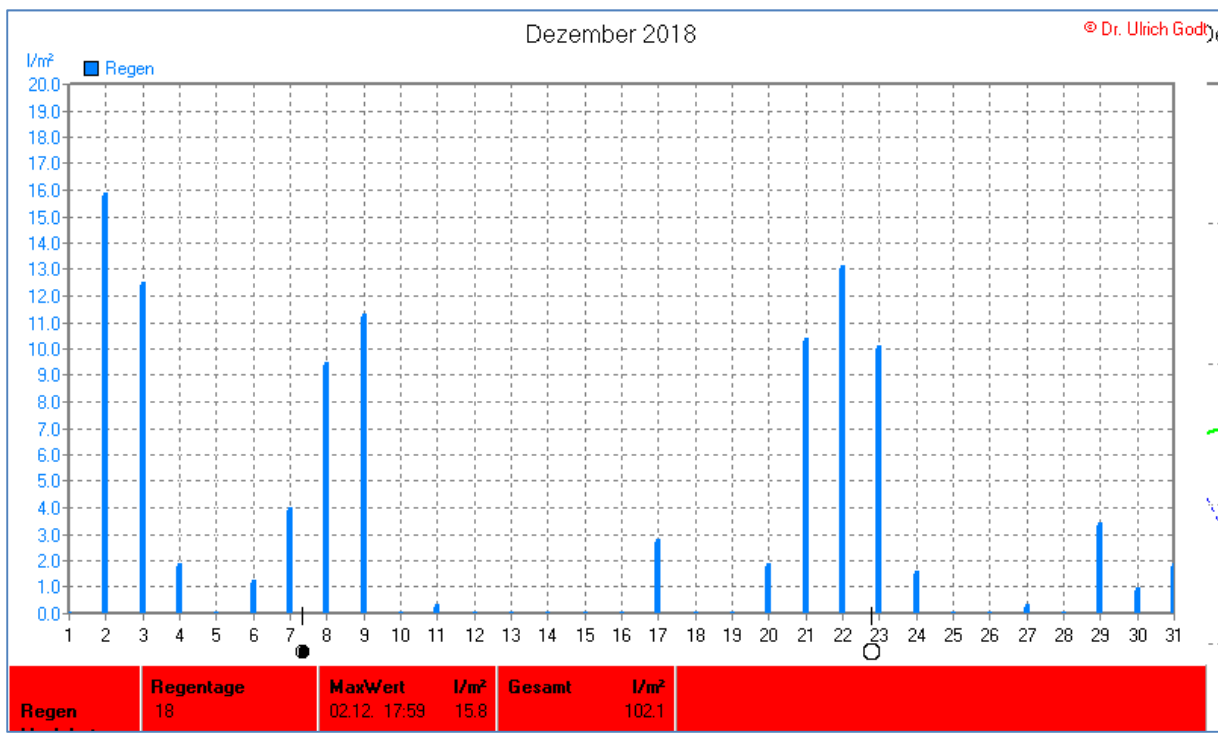
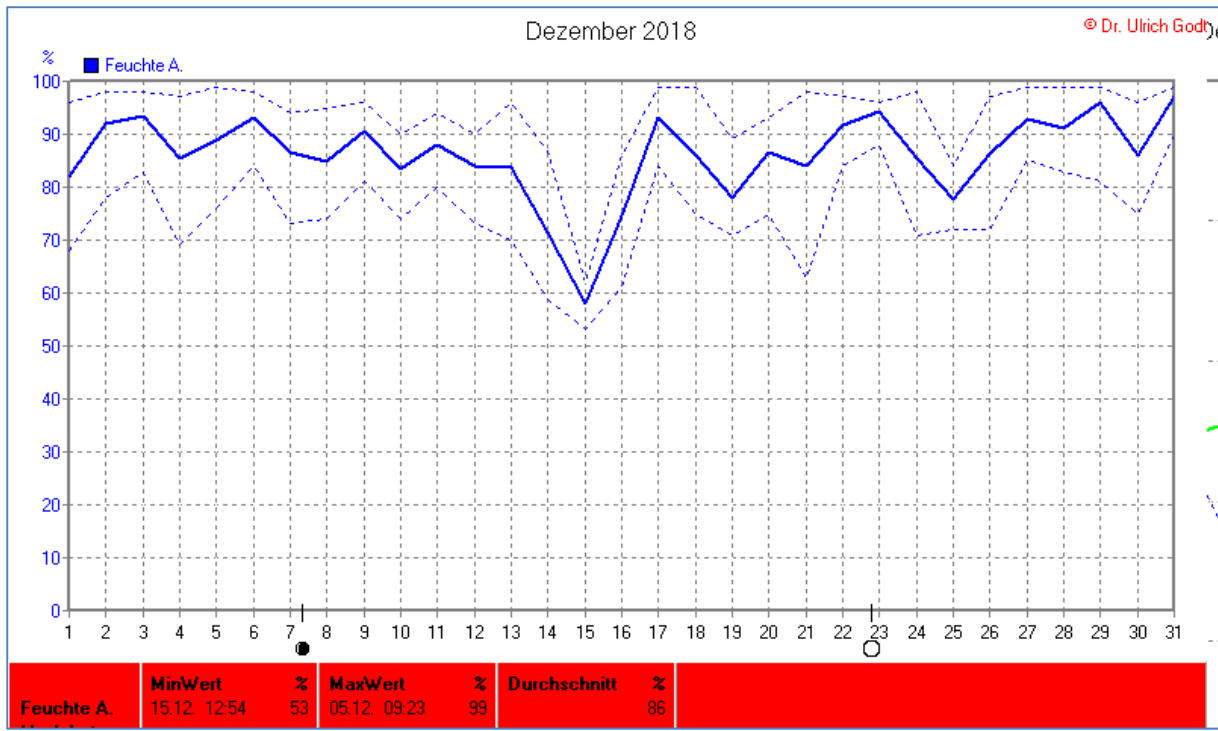
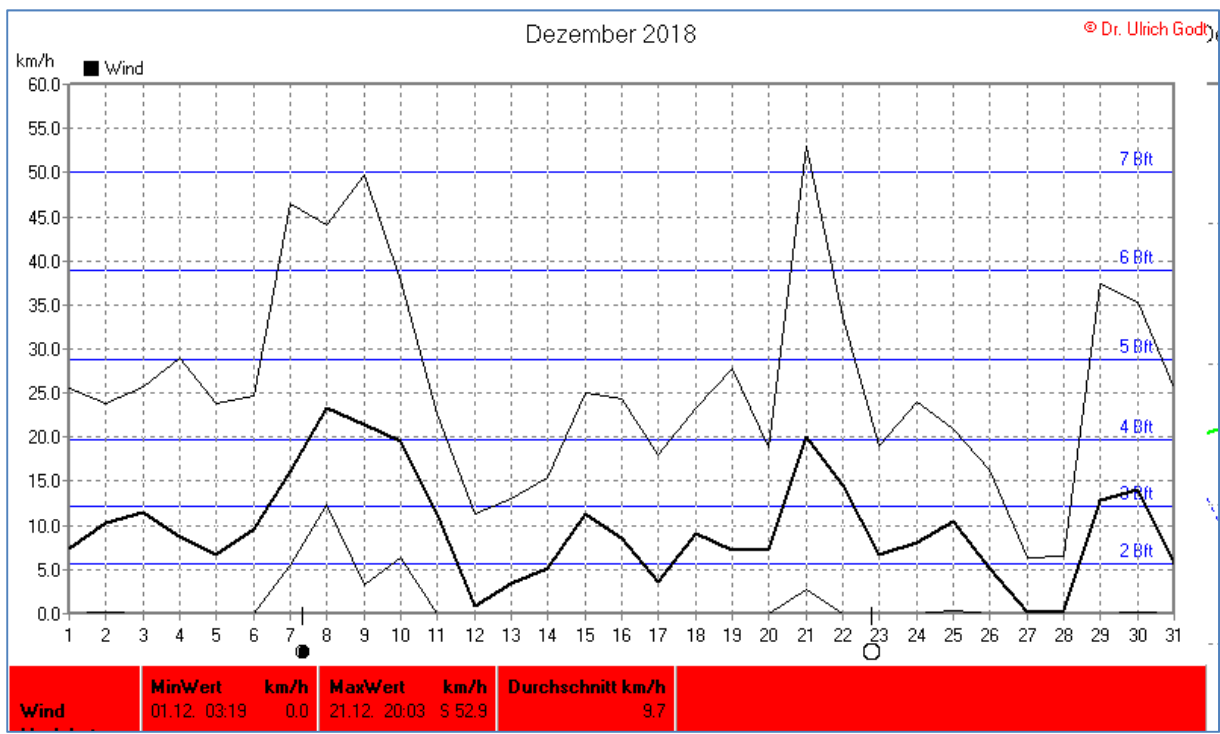
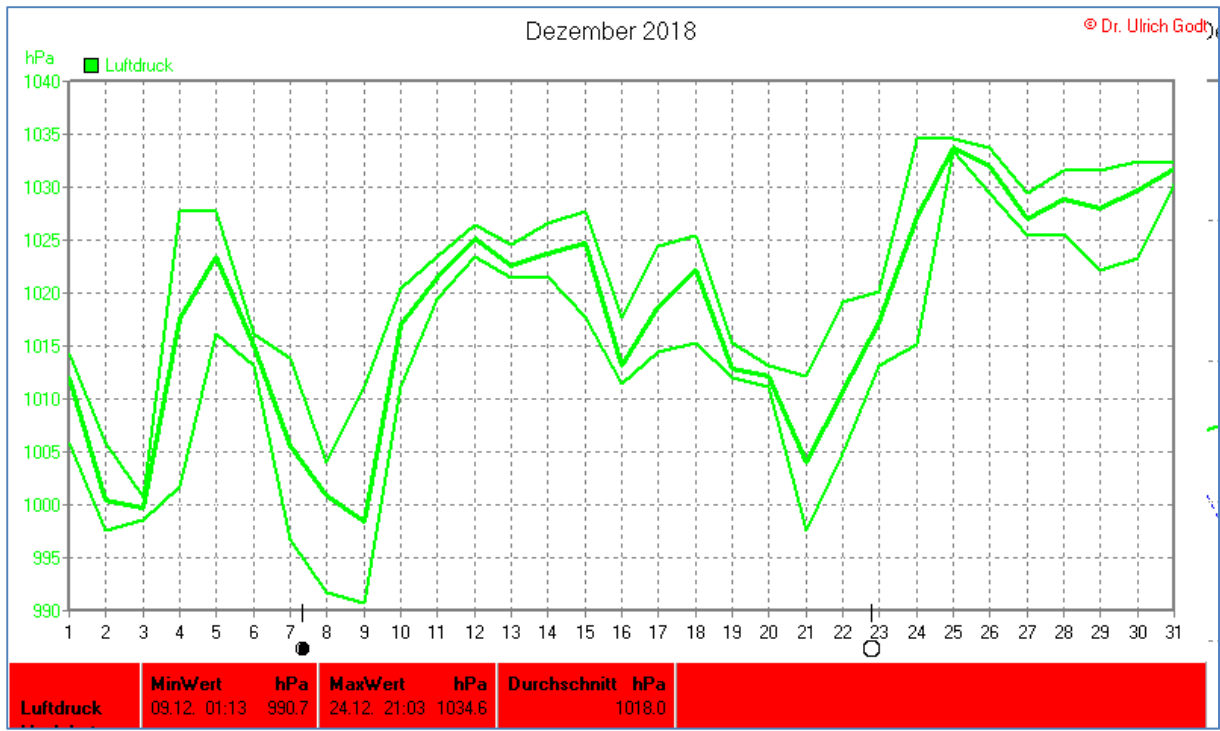


Wettertabelle und Grafiken Dezember 2018 Station Elsen

Wetterdaten Dezember 2018 Station Elsen							
© Dr. Ulrich Godt							
Meßgröße	Minimum	Zeit	Datum	Maximum	Zeit	Datum	Durchschnitt
Temperatur	-3,3 °C	08:03	28.12.2018	12,1 °C	14:39	03.12.2018	4,8 °C
Bodentemp.	-3,1 °C	07:43	28.12.2018	11,0 °C	21:49	02.12.2018	1,9 °C
Luftfeuchte	53 %	12:54	15.12.2018	99 %	09:23	05.12.2018	86 %
Luftdruck	990,7 hPa	01:13	09.12.2018	1034,6 hPa	21:03	24.12.2018	1018,0 hPa
Wind km/h				52,9 km/h	20:03	21.12.2018	9,7 km/h
Wind °				S	20:03	21.12.2018	W-SW
Regen l/m ²				15,8 l/m ²	17:59	02.12.2018	#102,144 l/m ²
Sonne h				4:20 h	14:13	04.12.2018	#29:28 h

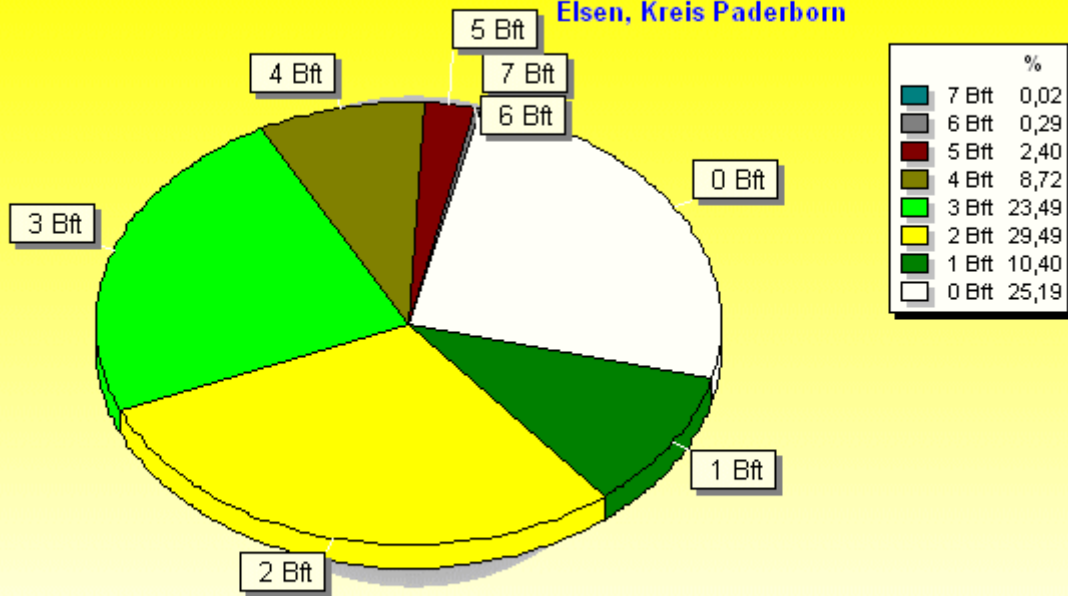






Verteilung Windstärke Dezember 2018

Elsen, Kreis Paderborn

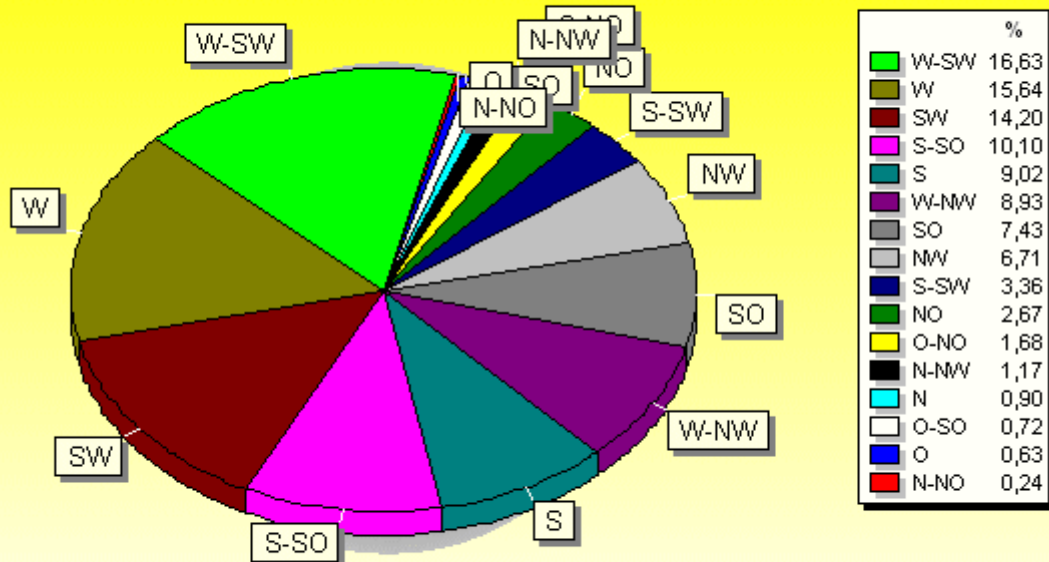


4462 Werte - Ø 9,7km/h - Max. 52,9km/h

© WzWin32 - © Dr. Ulrich Godt - Elsen, Kreis Paderborn

Verteilung Windrichtung Dezember 2018

Elsen, Kreis Paderborn



3338 / 1124 Werte -> 25.2% Windstille - Ø 9,7km/h - Max. 52,9km/h

© WzWin32 - © Dr. Ulrich Godt - Elsen, Kreis Paderborn

